



LSC

Laboratorio Subterráneo de Canfranc

EMERGENCY RULES

Course for users

LSC, April 2015

GENERAL PROTECTION SYSTEMS (LAB2400/LAB2500)

1.- FIRE PREVENTION SYSTEM (LAB2400)

Alarm system connected to 24 hour external Alarm Switchboard

Alarms/Fire Alarm: sirens and lights

Button for incidents
(not fire)

Manual Buttons

Button for fire



7 Emergency Buttons LAB2400
(2 x Hall A, Hall B, Hall C, Corridor, Office) (every room)

2.- CO₂ EXTINTION SYSTEM (HALL A, HALL B/HALL C, Electrical Service Rooms)

Automatic and manual system

Alarms: sirens and signs (over the doors, at the LAB2400 entrance)

Alarm Switchboard



Signs (LAB2400 Entrance)



Manual buttons ("Disparo", "Bloqueo")

RISK ! = SUFFOCATION

3.- OXIGEN DETECTION SYSTEM (HALL A, HALL B/HALL C, Gases Storage Room)

Automatic detection system (alarm < 20,9% O₂)

Alarm: alarm at the switchboard, sirens and lights

Portable oxigen sensors (8 units).



SAFETY AND GENERAL PROTECTION IMPROVEMENTS HALL A (LAB2400) – From Sept 2014

1.- SELF- BREATHING EQUIPMENTS

Two new equipments

Location: Hall A, NEXT experiment area



2.- TEMPERATURE MONITORING SYSTEM

Six point under control, integrated into the LSC Slow Control

Location: Hall A

Alarms: sirens, displays, switchboard in Hall A, board at the entrance



3.- IMPROVEMENTS IN THE OXIGEN DETECTION SYSTEM

Four new point under control, integrated into the LSC Slow Control

Location: Hall A

Alarms: sirens, displays, switchboard in Hall A, board at the entrance

3.- ACCESS TO THE POOL (HALL A) & PERSONNEL PROTECTIVE EQUIPMENT

Access to the pool in Hall A only with LSC authorization.

Personnel protective equipment (EPI's) mandatory: special boots and portable oxygen sensor)



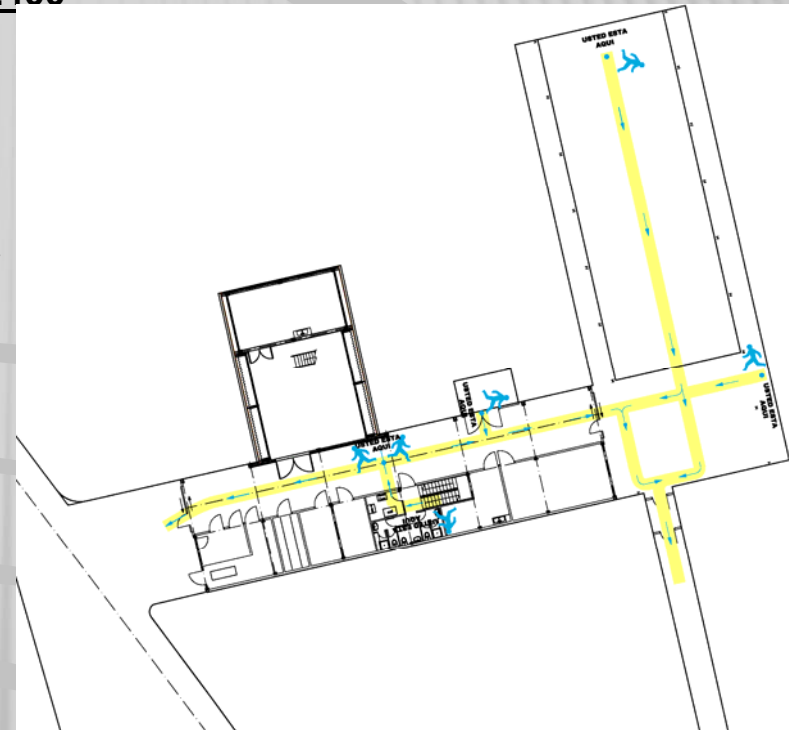
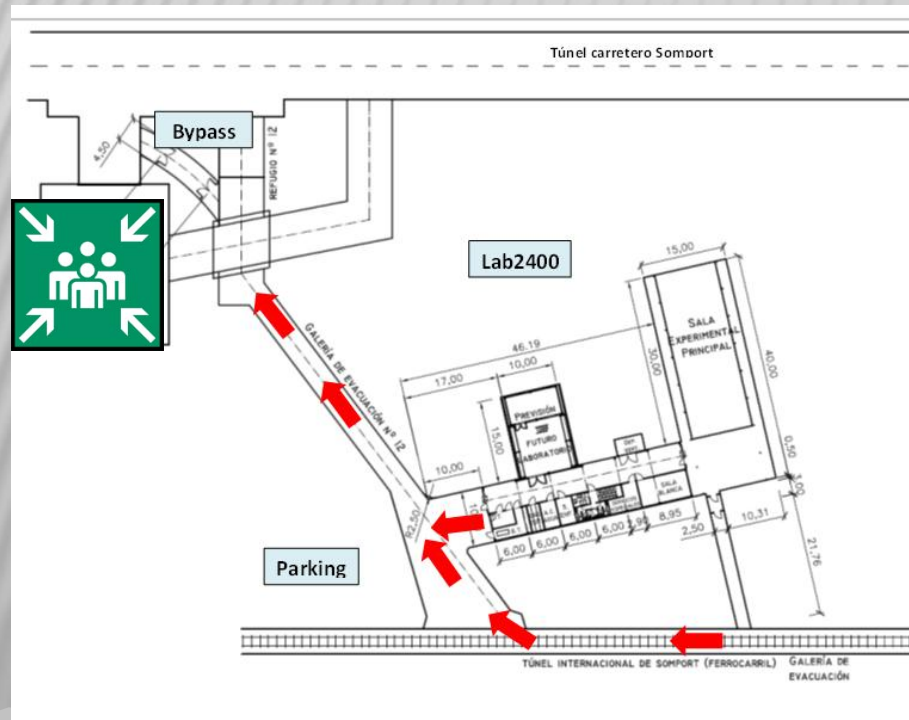
In case of general evacuation in LAB2400 and LAB2500 EVACUATION ROUTES & MEETING POINT AT THE LAB2400

THREE EVACUATION ROUTES

- From the Corridor to the LAB2400 Entrance
- From Hall A through the Evacuation Pedestrian Corridor to the Train Tunnel
- From the Office to the LAB2400 Entrance

Meeting Point : **BYPASS**

(SOS Communication Point, benches)



Emergencies defined and evaluated in LAB2400/LAB2500

- Accident at work
- Fire
- Accident by chemicals or other products
- Faults in general facilities or systems
- Bomb scare

How to detect and know details about an emergency

1st The alert:

- in person (yourself, staff /users/companies)
- by phone (emergency in CC-TS or other labs)
- by automatic systems (sirens, lights...)

Aim: detect the emergency without details to mobilize the First Intervention Team (LSC staff)

2nd The alarm: in a safety area (corridor), keep together in order to investigate and evaluate the emergency and give instructions

Aim: once the emergency has been evaluated, the Intervention Responsible/ Person in charge will give instructions to the users

IN CASE OF EMERGENCY:

0) Keep together in a pre-safety area (in the middle of the corridor LAB2400)

1st) KEEP CALM; investigate and evaluate the emergency

2nd) IMMEDIATELY NOTIFY TO CONTROL CENTER SOMPORT TUNNEL AND TO THE LSC through an LSC worker or by phone

Outside working hours, notify only to the Control Center Somport Tunnel
Phones distributed in the LSC LAB2400 with set function keys (direct call)

3rd) INFORM ABOUT:

Place of the emergency

Type and magnitude of the emergency

Personnel affected

Predictable evolution and propagation

4th) FOLLOW THE INSTRUCTIONS given by the LSC or Control Center Somport Tunnel

* In all cases, keep safe the person involved in the accident.

EMERGENCIES

TEL. 112

LSC External Building 974 / 37 34 74 – 974/ 37 35 05

Control Center Somport Tunnel (CC-TS) Tel. 974 / 37 35 24